

# TRIPS FLIER – AUGUST 2015

**UNLESS OTHERWISE STATED, SIGN-UP CAN BEGIN TUESDAY, AUGUST 4**

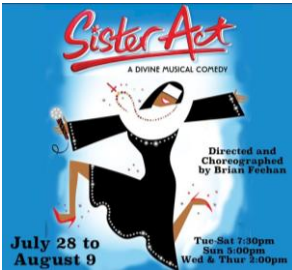
**To sign up for trips call 366-1234.**

Please note: There is a \$10 fee charged for cancellations within 72 hours of the trip.

Non-residents pay a \$10 fee for going on Taylor Community trips.

The trips have descriptors – **Easy, Moderate, and Independent** – indicating the degree of mobility [walking, standing, stepping, etc.] required in order to safely participate and enjoy the trip. If a trip requires pre-paid tickets or entry fees, you cannot be reimbursed if you cancel from the trip OR if Taylor needs to cancel the trip due to weather conditions that make driving unsafe.

**Please Note:** All pick-up times are an approximation as circumstances may arise that could alter times by a few minutes.



**Thursday – August 6 – Interlakes Summer Theatre production of “Sister Act.”** [Easy] Taylor Community is a Season Sponsor for the Theatre. This trip was advertised as an early sign-up and tickets have been pre-paid (sign-up now closed). **The bus will begin picking up residents on the Laconia campus at 1:00 PM.**



**Thursday – August 6 – The Season Finale NH Music Festival Classical Concert.** [Easy] This trip was advertised as an early sign-up (sign-up now closed). **Pick up for residents on the Laconia campus will begin at 6:00 PM.**



**Friday – August 7 – Lunch at the Canoe Restaurant in Center Harbor, a visit to Moulton Farms and a stop in Meredith for ice cream before heading home.**

[Easy] Enjoy the view of Lake Winnepesaukee while dining at the Canoe Restaurant. The restaurant is known for its Lobster Mac and Cheese, hand-cut steaks and award-winning Sweet and Sour Calamari. Their menu offers something for every taste and appetite. While at Moulton Farms you can explore the greenhouse or be tempted by the large assortment of bakery items for your breakfast, lunch and dinner table. If you are in the mood for seafood, Sal's Fresh Seafood is located at the farm.

The owners are the 4<sup>th</sup> generation of their family to own and operate a commercial fishing business on the historic Boston Pier and the seafood is delivered fresh from the pier at least twice daily. Your driver will choose a spot in Meredith to stop for ice cream. It could be Flurries, Ben & Jerry's or The Town Docks, driver's choice depending on available parking. **The bus will begin picking up residents on the Laconia campus at 10:45 AM.**

**Wednesday – August 12 – Dinner at Sandy Point Restaurant in Alton Bay followed by a stop for ice cream.** [Easy] For anyone who was disappointed with the new ownership of this restaurant you are in for a wonderful surprise. The latest reviews have stated that the food is amazing, and “off the charts” delicious. The staff provides prompt, friendly and courteous service. The ice cream venue will be the driver's choice. **The bus will begin picking up residents on the Laconia campus at 5:00 PM.**



**Friday – August 14 – Lunch at the 99 Restaurant in West Lebanon followed by a visit to Saint-Gaudens National Historic Site in Cornish.** [Easy – restaurant; Moderate to Independent – Saint-Gaudens].

The 99 Restaurant offers a menu of soups, salads, sides, seafood, steak, small plate appetizer specials and nine real size entrees for \$9.99. Please check the daily program and tour schedules at the Saint-Gaudens visitor center. There are over 100 pieces of sculpture exhibited in the galleries and on the grounds. Take advantage of the park orientation film (18 minutes): "An Introduction to the Life and Work of Augustus Saint-Gaudens." You may view the first floor of the Saint-Gaudens home "Aspet" where access is by guided tour only and limited to 12 people at a time on a first come, first serve basis. The park is also home to the Ravine Studio, the Formal Gardens, the Picture Gallery and several nature trails. The trails are hilly in places and may be slippery when wet, so visitors are asked to wear sturdy shoes if planning to walk the trails. Pathways around the park are of various surfaces; grass, brick, asphalt, bark mulch, cement and gravel. Because of the historic nature of this site, some of the pathways may be uneven and you are asked to take care when walking around. Please plan on an early lunch and at least 90 minutes are suggested for the site visit. **The park entrance fee is \$7.00 payable in cash at the entrance station. America the Beautiful Passes, including the Annual Pass and Senior Pass (formerly called the Golden Age Pass), allow free entrance for the pass holder. The bus will begin picking up residents on the Laconia campus at 8:30 AM and at the Concord Bus Station at approximately 9:15 AM.**



**Friday – August 21 – Wright Museum and the special World War II Exhibit**

**followed by Lunch at Wolfe's Tavern at the Wolfeboro Inn.** [Easy] Take a sentimental journey through dozens of great exhibits. Among the museum's highlights are fully-furnished period vignettes including a 1942 gas station, corner soda fountain and dentist's office. The current special exhibit "*Memories of World War II*" contains vintage artifacts and interactive displays that bring life to the American WWII

experience. A collection of fully-operational military vehicles lie at the core of the museum's collection. The museum store has wonderful gifts for any history buff. **The entrance fee is \$8.00 and payable at the museum entrance.** Wolfe's Tavern's Chef Hoke Wilson and his team put a sophisticated spin on favorite comfort foods. House-cured meats and local ingredients add depth to simple savory dishes. **The bus will begin picking up residents on the Laconia campus at 9:00 AM.**



**Friday – August 28 – Cog Railway followed by lunch in the Peppersass Restaurant.**

[Easy] Ride the Cog Railway to the Summit of Mount Washington via the new, more modern and eco-friendly biodiesel engine train. Sue needs to purchase train tickets well in advance (by or before July 20) as they do sell quickly during the summer months. You will have a late lunch at the Peppersass Restaurant, located in the Mansfield Base Station, and you will have time to browse through the gift shop before heading home. As the temperature averages in the mid-50's on the summit,

you are advised to dress in layers. **Tickets are \$63.00** for a 3-hour round trip that includes a 1-hour travel up and back and 1 hour to explore the summit with an **optional observatory tour for \$10.00 payable on your summit arrival.** The summit staff would like to know in advance how many people will be taking advantage of that tour so please tell JoAnn when you call. Early sign-up by or before July 20 was requested. The earlier the better! **The bus will begin picking up residents on the Laconia campus at 7:30 AM.**

**Looking Ahead to September**

**Early trip sign up for Friday – September 4 – Perkins Cove and the Marginal Way.**

[Easy to Moderate – a lot of walking] At Perkin's Cove you will be on your own to explore all the shops or you can just sit and enjoy the view. You can walk the entire length of the Marginal Way or just part of it. Enjoy lunch at one of the restaurants with ocean views. You may sign up on receipt of this information. **The bus will begin picking up residents on the Laconia Campus at 8:00 AM. The bus will make a convenience stop in Alton Bay between 8:45 and 9:00 AM.**

